

ARCHITETTO DE PEDRO FABIO  
VIA CASTAGNETO 13 - 25050 PASPARDO BS

TAVOLA 1  
Estratti cartografici

Incudine (BS) - Piazza G. Marconi

09/04/2025

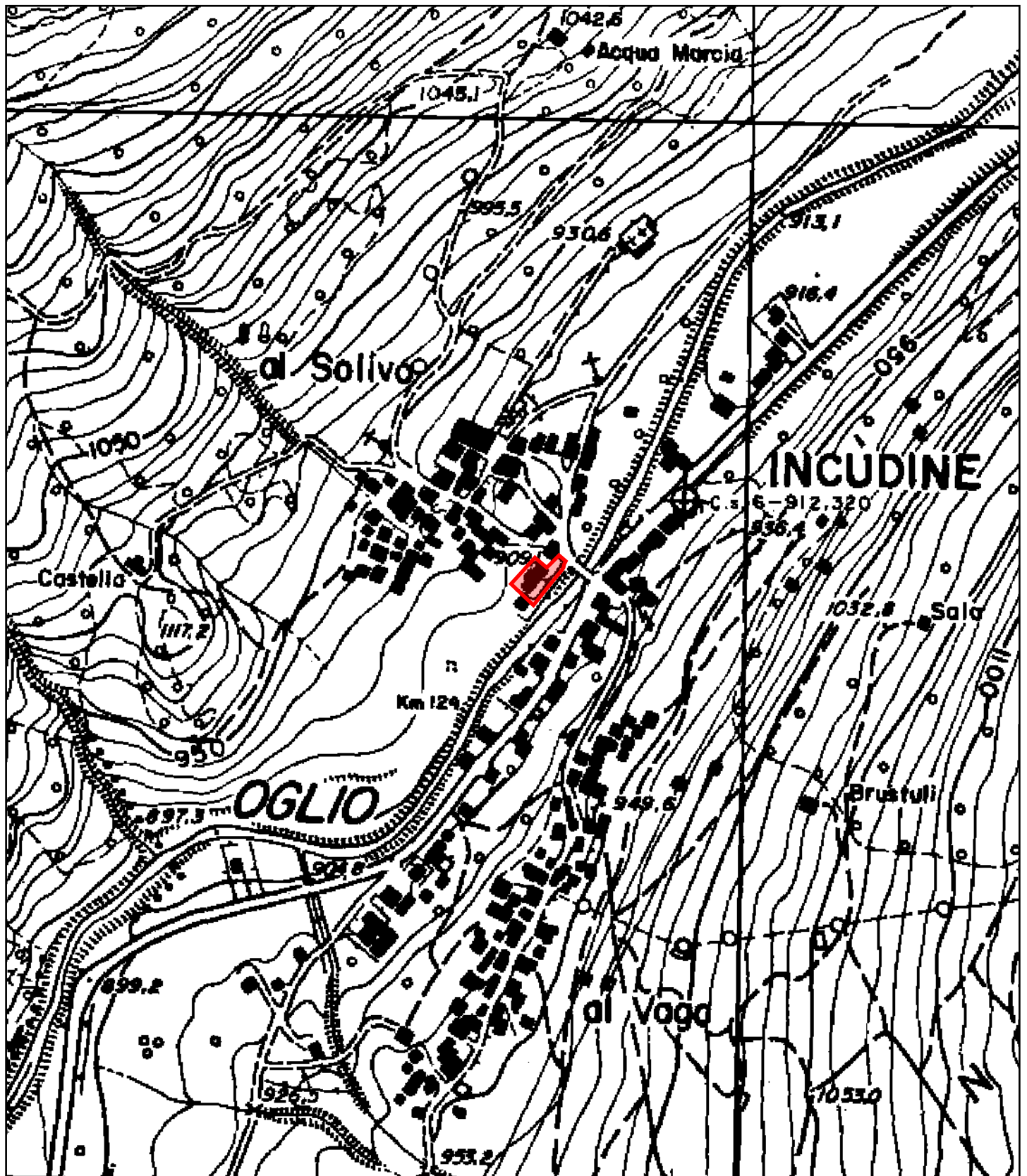
scala: VARIE

PROGETTO ESECUTIVO: RIQUALIFICAZIONE ENERGETICA COMPLESSO EDILIZIO COMUNALE  
ADIBITO A MUNICIPIO E SERVIZI CORRELATI

COMMITTENTE:  
Comune di Incudine

PROGETTISTA:  
Arch. De Pedro Fabio

## Carta Tecnica Regionale



150m

1:5.000

Sources: Esri, HERE, Garmin, Intermap, increment P Corp., GEBCO, USGS, FAO, NPS, NRCAN, GeoBase, IGN, Kadaster NL, Ordnance Survey, Esri Japan, METI, Esri China (Hong Kong), (c) OpenStreetMap contributors, and the GIS User Community | |



## Ortofoto



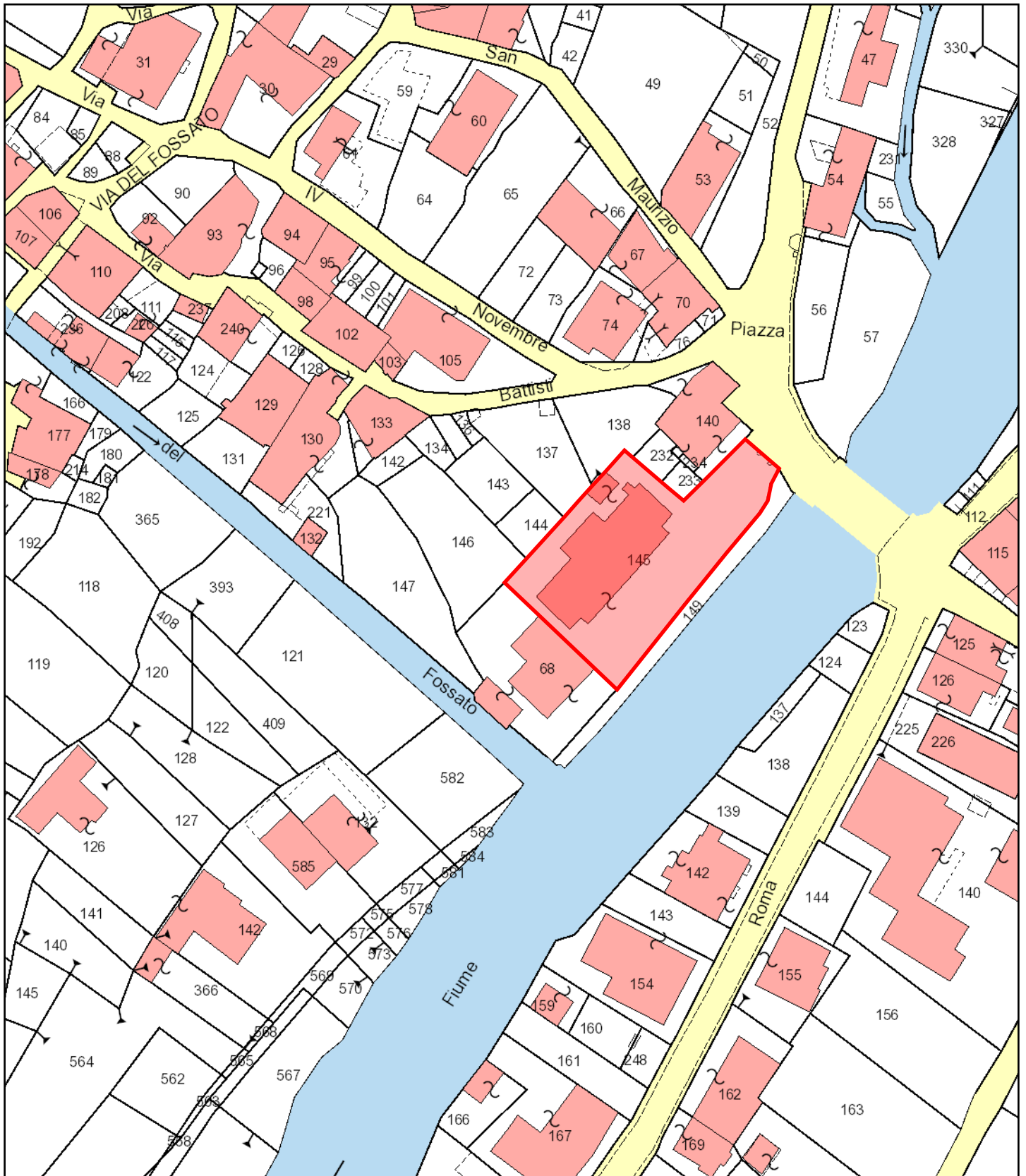
60m

1:2.000

Source: Esri, Maxar, GeoEye, Earthstar Geographics, CNES/Airbus DS, USDA, USGS, AeroGRID, IGN, and the GIS User Community



## Catasto



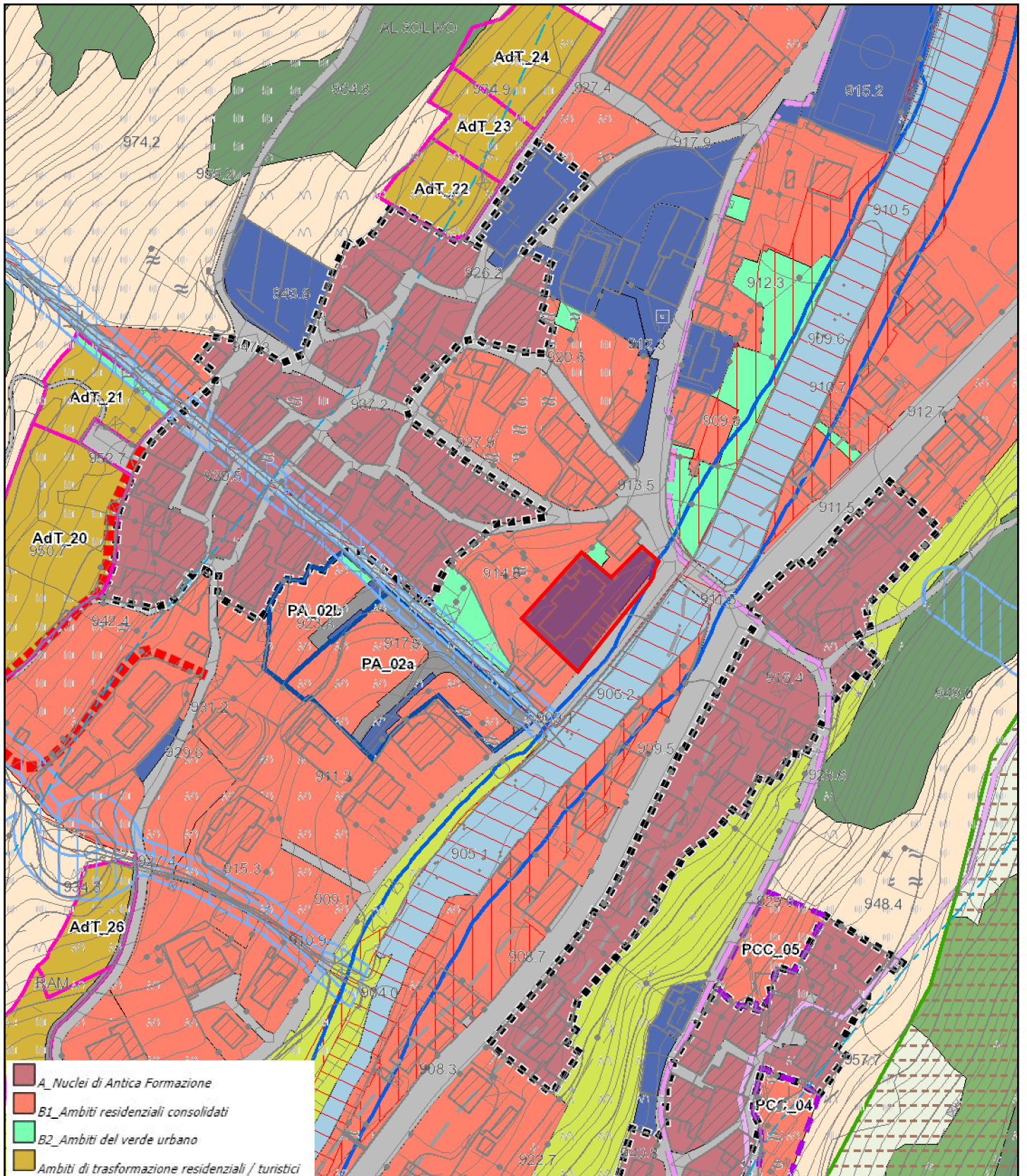
30m

1:1.000

Impossibile recuperare la mappa da [https://services.arcgisonline.com/arcgis/rest/services/World\\_Topo\\_Map/MapServer](https://services.arcgisonline.com/arcgis/rest/services/World_Topo_Map/MapServer)

Sources: Esri, HERE, Garmin, Intermap, increment P Corp., GEBCO, USGS, FAO, NPS, NRCAN, GeoBase, IGN, Kadaster NL, Ordnance Survey, Esri Japan, METI, Esri China (Hong Kong), (c) OpenStreetMap contributors, and the GIS User Community |

**Tav. 2 - Uso del suolo per il territorio comunale**



60m

1:2.000

Sources: Esri, HERE, Garmin, Intermap, increment P Corp., GEBCO, USGS, FAO, NPS, NRCAN, GeoBase, IGN, Kadaster NL, Ordnance Survey, Esri Japan, METI, Esri China (Hong Kong), (c) OpenStreetMap contributors, and the GIS User Community